

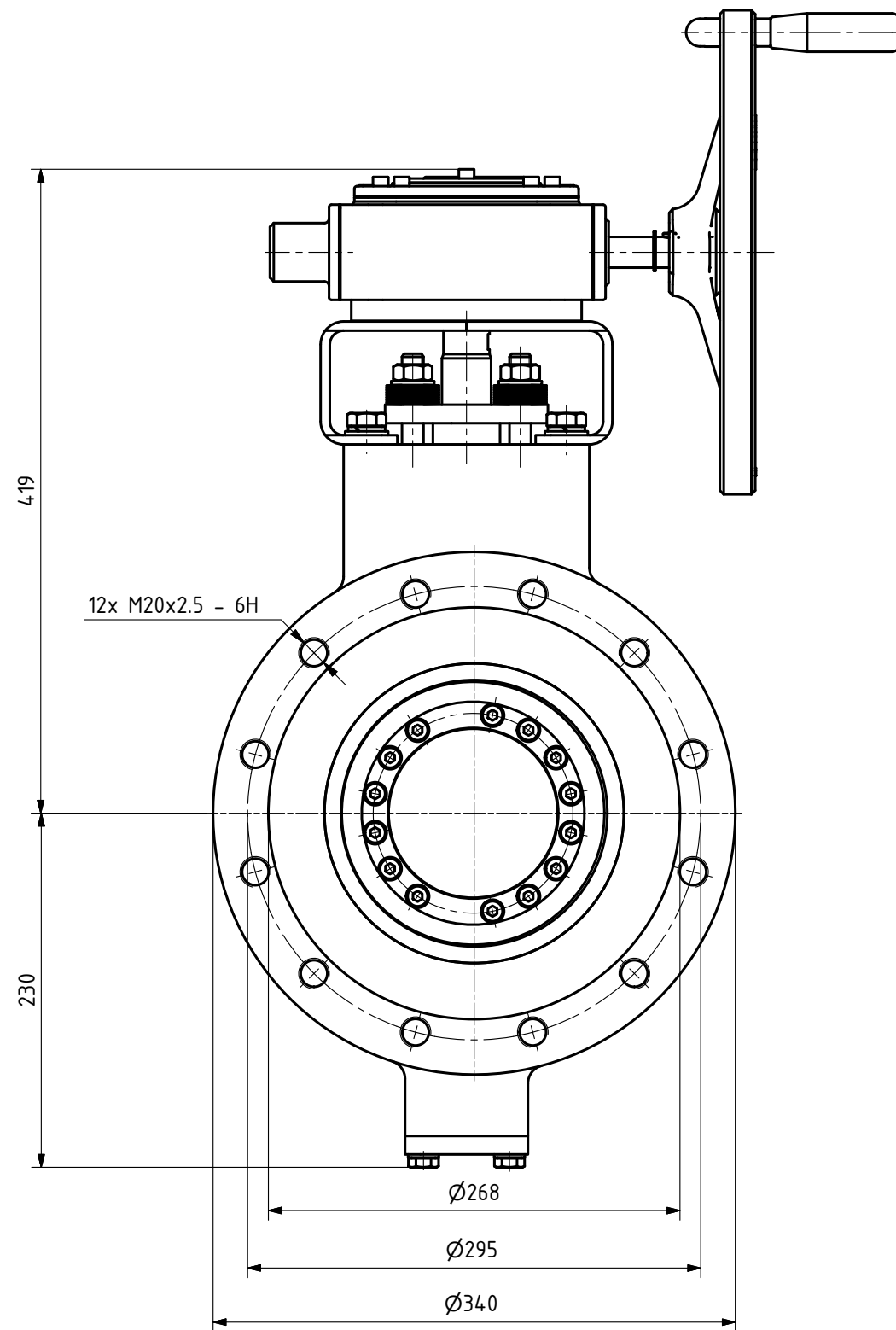
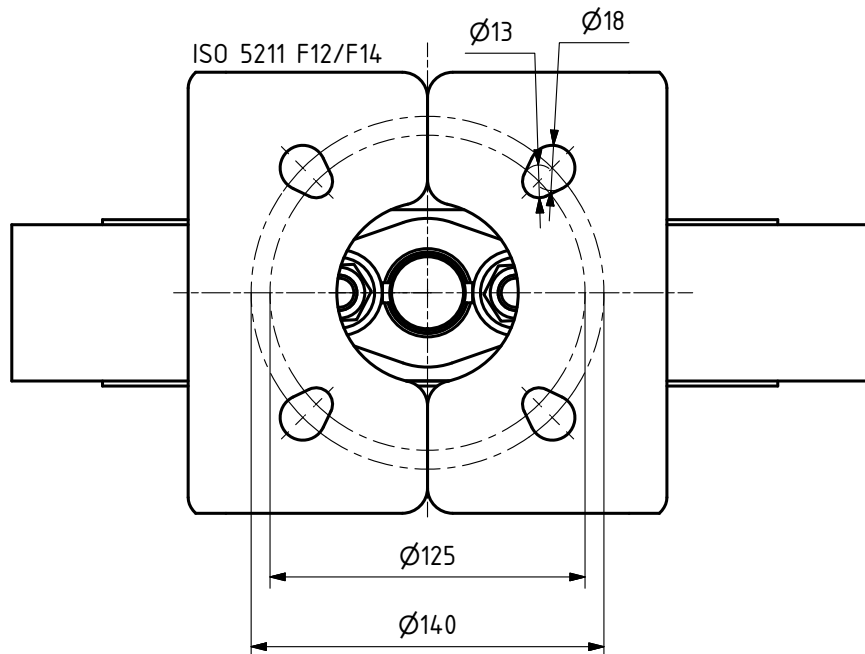
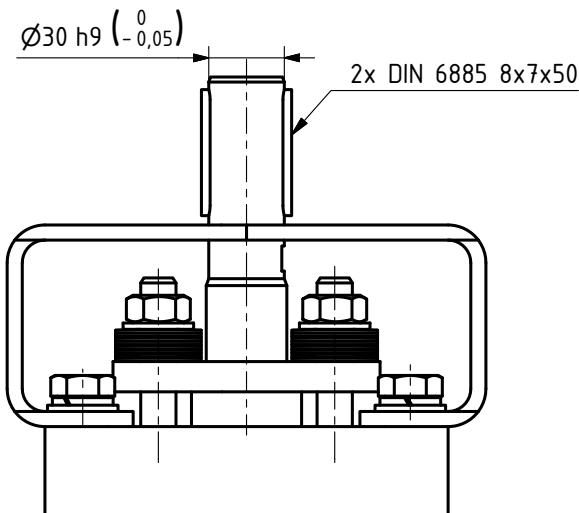
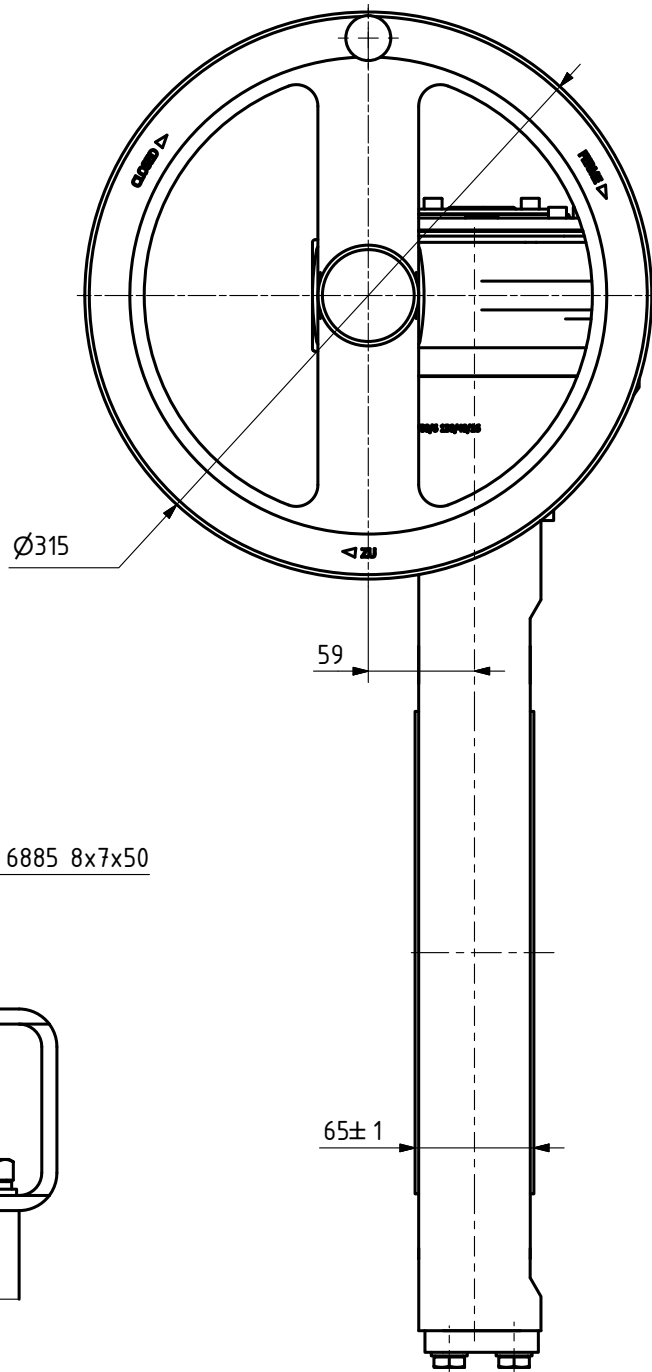
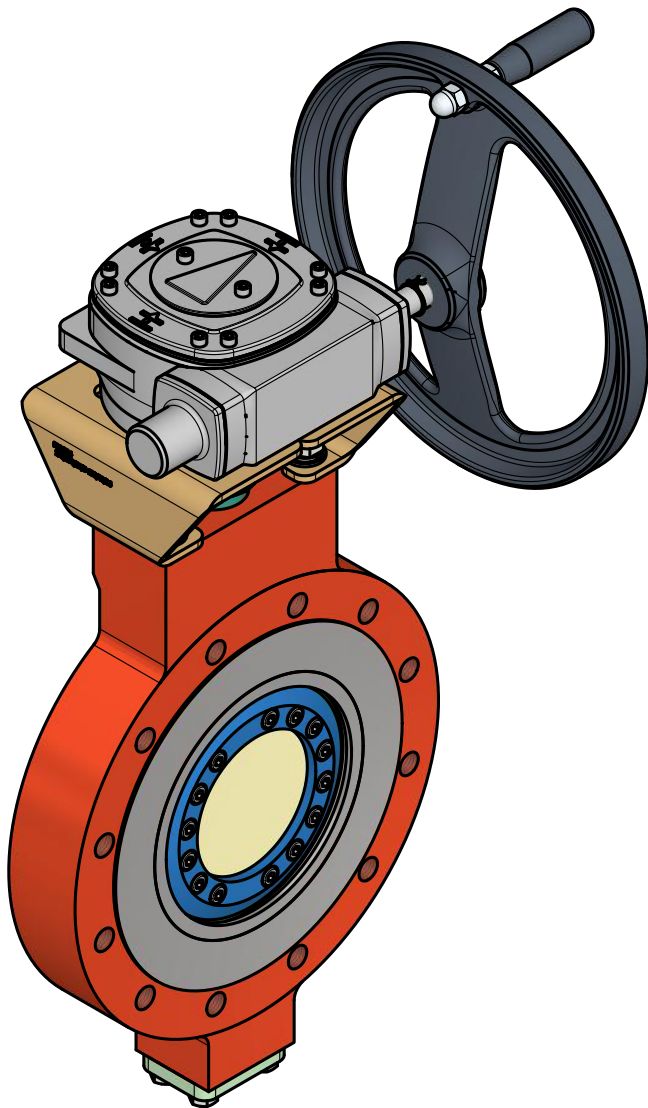
4

3

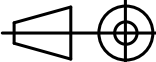
2

1

This drawing is confidential and is the property of MPR valves s.r.o. and must not be reproduced either wholly or partly. All rights in respect of patents, designs and copyrights are reserved. ©2016



Suitable for instalation between falnges spec. EN1092-1
Flange tolerances acc. to EN1092-1
FTF tolerances acc. to EN558
Tightness rate A acc. to EN 12266-1 - 0 leakage

Date:	10.12.2019	General tolerances ISO 2768 mK- Machined surface ISO 2768 cL- Not machined surface, assembly Protection ISO16016		Size: A3	Index	Change	Name	Date
Drawn:	David Benda							
Checked:	Tomáš Maar		Scale:					
Approved:	Jaroslav Jaroš							
Assembly:		TITLE: KINEVA DN200 PN16 LUG						
Internal No.:								
MPR ® MPR valves s.r.o Václavská 99 639 00 BRNO		PART NUMBER					List	INDEX
		FTF acc. to API 609/EN558 ser. 108						